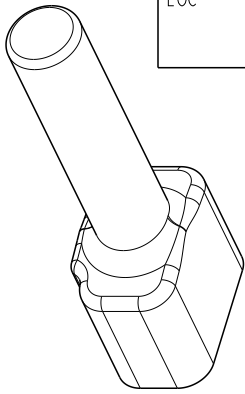


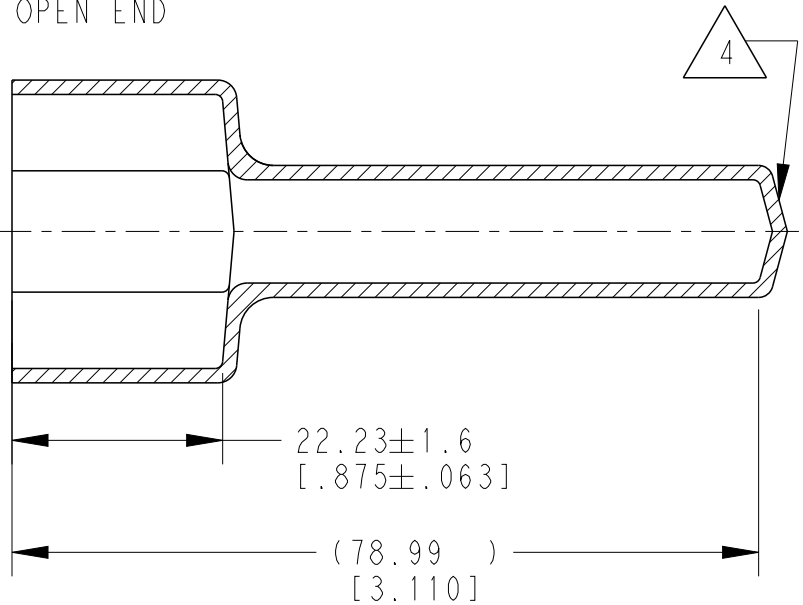
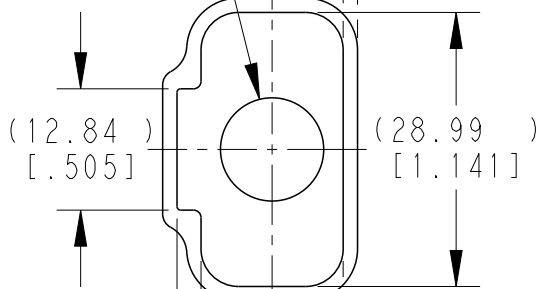
LOC	DIST	REVISIONS					
		P	LTR	DESCRIPTION	DATE	DWN	APVD
		A		NEW RELEASE PER ECO-14-010245	05AUG2014	DM	DM
		A1		REVISED PER PCN E-19-014637	02OCT2019	JA	IG
		A2		REVISED PER PCN E-20-004864	27MAR2020	AP	IG



SCALE 3:4

( $\varnothing 10.92$ )  
[.430]

$1.52 \pm 0.25$   
[.060  $\pm$  .010]  
MEASURED  $6.35 \pm 0.64$   
[.250  $\pm$  .025]  
FROM OPEN END



5. SMALL NON-FILLS ARE ACCEPTABLE INSIDE OF PART, INCLUDING SUPPLIER MARKING.
4. SMALL MATERIAL EXTENSION IS ACCEPTABLE ON THIS END ALL AROUND. WALL THICKNESS ON THIS END MAY VARY.
3. THIS ACCESSORY PART IS PROVIDED WITHOUT TYPICAL TRANSPORTATION INDUSTRY PROCESS CONTROL. NO VALIDATION TESTING HAS BEEN PERFORMED. CUSTOMER IS RESPONSIBLE FOR DETERMINING PRODUCT PERFORMANCE AND SUITABILITY FOR APPLICATION.
2. TEMPERATURE RATING:  $-29^{\circ}\text{C}$  TO  $+100^{\circ}\text{C}$  [ $-20^{\circ}\text{F}$  TO  $+212^{\circ}\text{F}$ ]
1. THIS PART IS USED ON DTM04-12PX (X=A,B,C,D KEYS) RECEPTACLES WITH ANY MODIFICATION THAT DOES NOT INCLUDE AN END CAP.

TE INTERNAL PN	DEUTSCH PN
DTM12P-BT	DTM12P-BT

THIS DRAWING IS UNPUBLISHED. RELEASED FOR PUBLICATION 2019

TE Connectivity. All Rights Reserved. COPYRIGHT 2014

DIMENSIONS: mm [INCHES]	DWN D.MEYER	05AUG2014	MATERIAL	PVC	FINISH	GRAY
	CHK B.MILLIGAN	05AUG2014	TE Connectivity			
TOLERANCES UNLESS OTHERWISE SPECIFIED:	APVD D.MEYER	05AUG2014				
0 PLC $\pm$	PRODUCT SPEC		SIZE	CAGE CODE	DRAWING NO	RESTRICTED TO
1 PLC $\pm$	APPLICATION SPEC		A 4	4AFU8	©-DTM12P-BT	-
2 PLC $\pm$			WEIGHT 7.61g			
3 PLC $\pm 0.63$ [.025]			CUSTOMER DRAWING			
4 PLC $\pm$			SCALE	5:4	SHEET	1 OF 1
ANGLES $\pm 0^{\circ} 30' 0''$			REV A2			