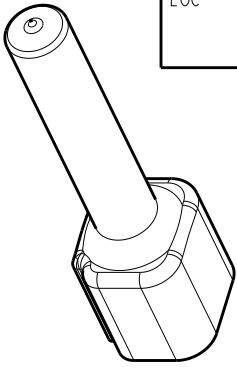
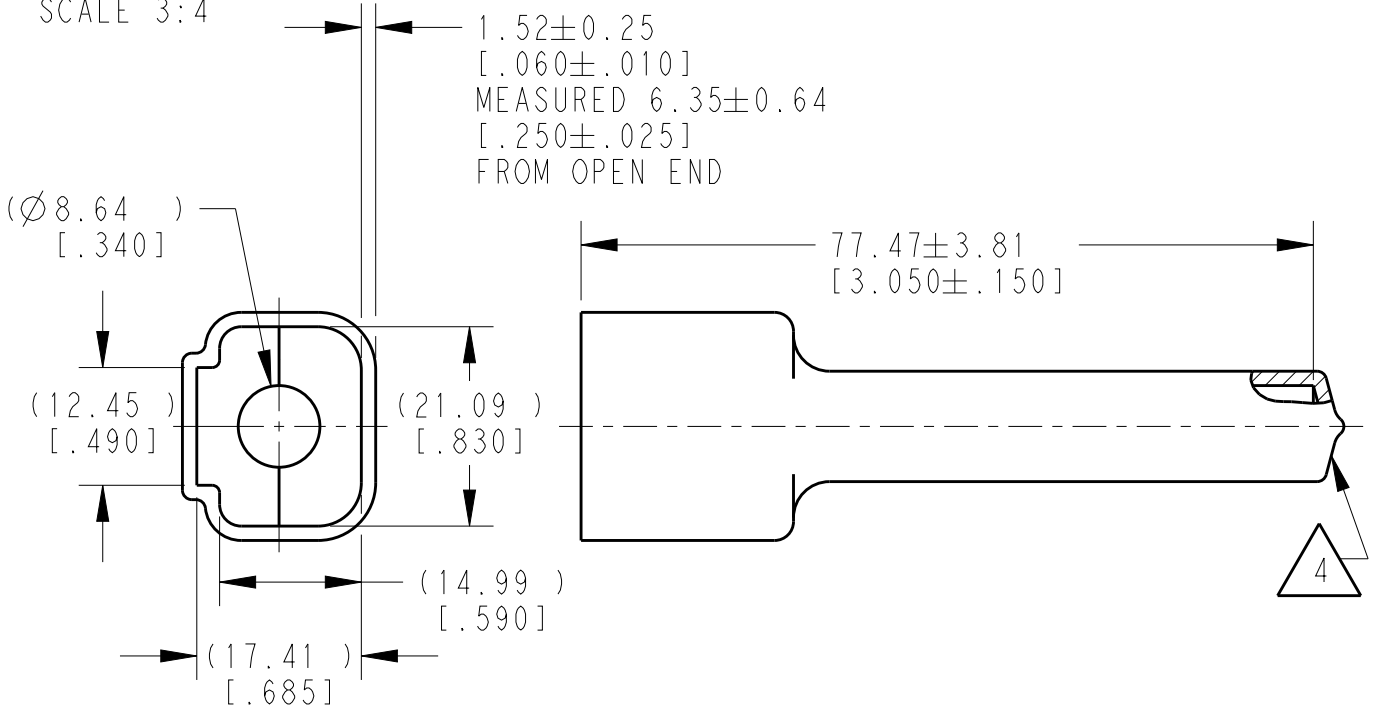


LOC	DIST	REVISIONS					
		P	LTR	DESCRIPTION	DATE	DWN	APVD
			A	NEW RELEASE PER ECO-14-010244	05AUG2014	DM	DM
			A1	REVISED PER PCN E-19-014639	09OCT2019	JA	IG



SCALE 3:4



- △ 4 SMALL MATERIAL EXTENSION IS ACCEPTABLE ON THIS END ALL AROUND.
3. THIS ACCESSORY PART IS PROVIDED WITHOUT TYPICAL TRANSPORTATION INDUSTRY PROCESS CONTROLS. NO VALIDATION TESTING HAS BEEN PERFORMED. CUSTOMER IS RESPONSIBLE FOR DETERMINING PRODUCT PERFORMANCE AND SUITABILITY FOR APPLICATION.
 2. TEMPERATURE RATING: -29°C TO +100°C [-20°F TO +212°F].
 1. THIS PART IS USED ON DTM04-08PX (X=A,B,C,D KEYS) RECEPTACLES WITH ANY MODIFICATION THAT DOES NOT INCLUDE AN END CAP.

TE INTERNAL PN	DEUTSCH PN
DTM8P-BT	DTM8P-BT

2019
RELEASED FOR PUBLICATION
THIS DRAWING IS UNPUBLISHED.
© COPYRIGHT 2014
TE Connectivity. All Rights Reserved.

DIMENSIONS: mm [INCHES]	DWN D.MEYER	05AUG2014	MATERIAL	PVC	FINISH	GRAY
	CHK B.MILLIGAN	05AUG2014	TE Connectivity			
TOLERANCES UNLESS OTHERWISE SPECIFIED:	APVD D.MEYER	05AUG2014				
0 PLC ±	PRODUCT SPEC		SIZE	CAGE CODE	DRAWING NO	RESTRICTED TO
1 PLC ±	APPLICATION SPEC		A 4	4AFU8	©-DTM8P-BT	-
2 PLC ±			WEIGHT	6.04g		
3 PLC ±0.64 [.025]			CUSTOMER DRAWING	SCALE	5:4	SHEET 1 OF 1
4 PLC ±						REV A1
ANGLES ±0°30'0"						