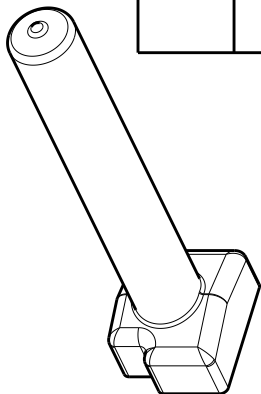
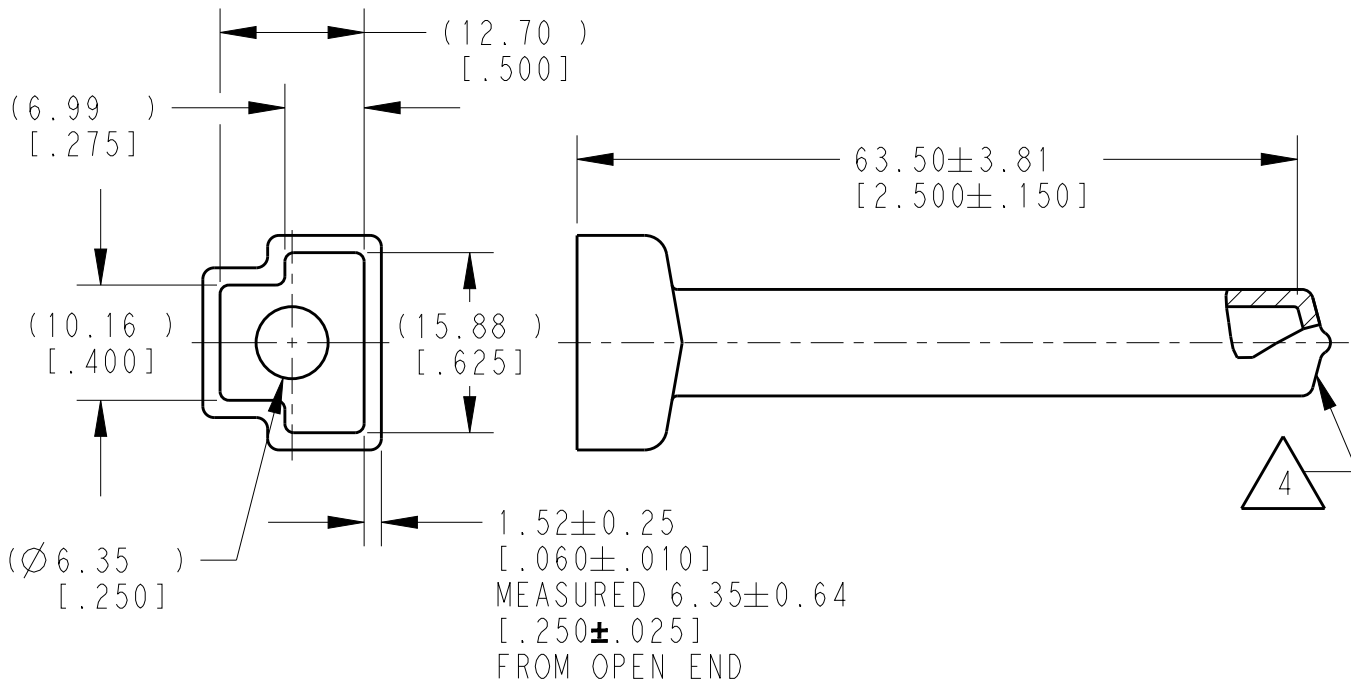


LOC	DIST	REVISIONS				
P	LTR	DESCRIPTION	DATE	DWN	APVD	
	A	NEW RELEASE PER ECO-14-010241	07JUL2014	DM	DM	
	A1	REVISED PER PCN-E-19-015669	08OCT2019	JA	IG	



SCALE 1:1



- 4 SMALL MATERIAL EXTENSION IS ACCEPTABLE ON THIS END ALL AROUND.
3. THIS ACCESSORY PART IS PROVIDED WITHOUT TYPICAL TRANSPORTATION INDUSTRY PROCESS CONTROLS. NO VALIDATION TESTING HAS BEEN PERFORMED. CUSTOMER IS RESPONSIBLE FOR DETERMINING PRODUCT PERFORMANCE AND SUITABILITY FOR APPLICATION.
2. TEMPERATURE RATING: -29°C TO +100°C [-20°F TO +212°F].
1. THIS PART IS USED ON DTM06-3S PLUGS WITH ANY MODIFICATION THAT DOES NOT INCLUDE AN END CAP.

TE INTERNAL PN	DEUTSCH PN
DTM3S-BT	DTM3S-BT

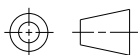
2019 RELEASED FOR PUBLICATION

THIS DRAWING IS UNPUBLISHED. ALL RIGHTS RESERVED. TE Connectivity. All Rights Reserved. COPYRIGHT 2014

DIMENSIONS:	
mm	[INCHES]
TOLERANCES UNLESS OTHERWISE SPECIFIED:	
0 PLC	±
1 PLC	±
2 PLC	±
3 PLC	±0.64 [.025]
4 PLC	±
ANGLES	±0°30'0"

DWN	D.MEYER	07JUL2014
CHK	B.MILLIGAN	07JUL2014
APVD	D.MEYER	07JUL2014
PRODUCT SPEC		
APPLICATION SPEC		
WEIGHT	3.15g	

MATERIAL	PVC	FINISH	GRAY
NAME		BOOT, PLUG, 3PIN DTM SERIES	
SIZE	CAGE CODE	DRAWING NO	RESTRICTED TO
A 4	4AFU8	©-DTM3S-BT	-



CUSTOMER DRAWING	SCALE	3:2	SHEET	1	OF	1	REV	A1
------------------	-------	-----	-------	---	----	---	-----	----