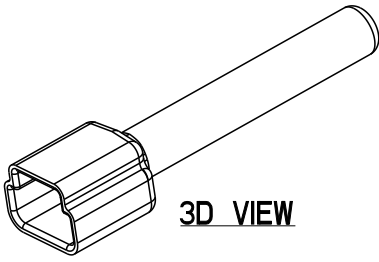
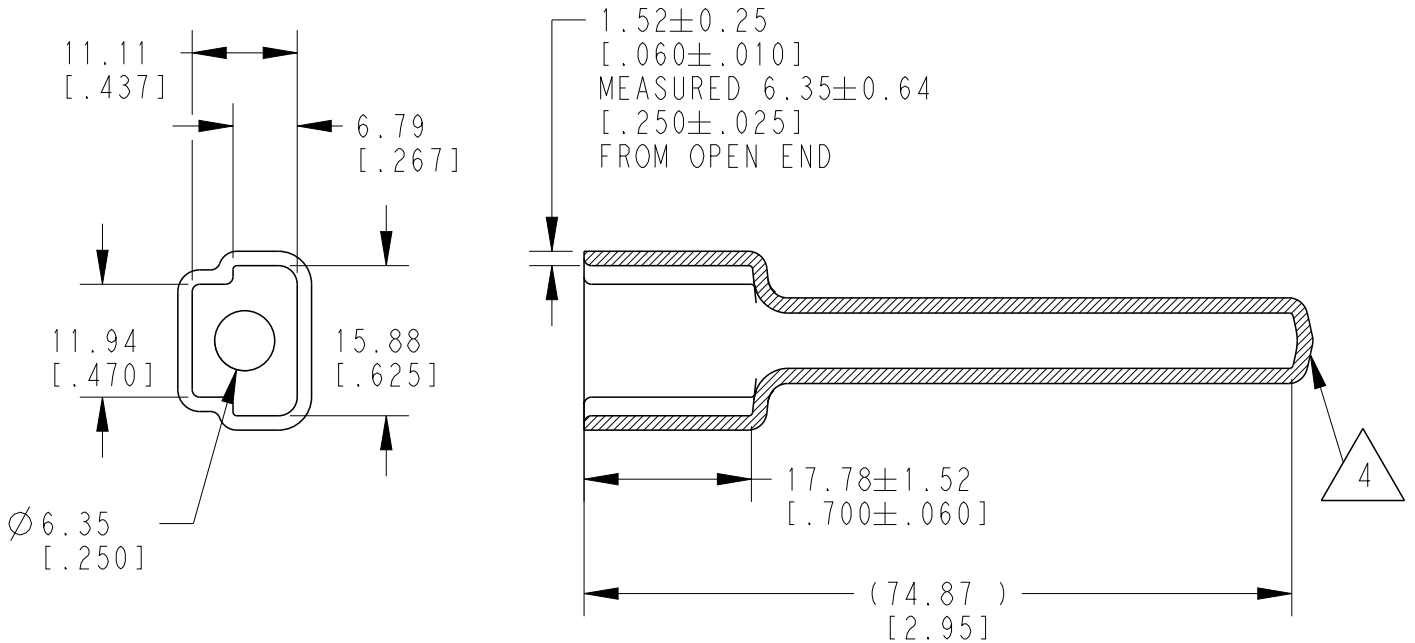


REVISIONS

P	LTR	DESCRIPTION	DATE	DWN	APVD
	A	NEW RELEASE PER ECO-14-010241	07-07-14	DM	DM
	A1	REVISED PER PCN E -20-004148	18MAR2020	AP	IG



3D VIEW



5. SMALL NON-FILLS ARE ACCEPTABLE INSIDE OF PART, INCLUDING SUPPLIER MARKING.

4. SMALL MATERIAL EXTENSION IS ACCEPTABLE ON THIS END ALL AROUND. WALL THICKNESS ON THIS END MAY VARY.

3. THIS ACCESSORY PART IS PROVIDED WITHOUT TYPICAL TRANSPORTATION INDUSTRY PROCESS CONTROLS. NO VALIDATION TESTING HAS BEEN PERFORMED. CUSTOMER IS RESPONSIBLE FOR DETERMINING PRODUCT PERFORMANCE AND SUITABILITY FOR APPLICATION.

2. TEMPERATURE RATING: -29°C TO $+100^{\circ}\text{C}$ [-20°F TO $+212^{\circ}\text{F}$]

1. THIS PART IS USED ON DTM04-3P RECEPTACLES WITH ANY MODIFICATION THAT DOES NOT INCLUDE AN END CAP.

NOTES:

TE INTERNAL PN	DEUTSCH PN
DTM3P-BT	DTM3P-BT

© 2020 TE Connectivity. All Rights Reserved.

DIMENSIONS: MM [INCH]	DWN D. MEYER	07JUL2014	MATERIAL	PVC	FINISH	GRAY
	CHK B. MILLIGAN	07JUL2014				
TOLERANCES UNLESS OTHERWISE SPECIFIED:	APVD D. MEYER	07JUL2014				
0 PLC \pm	PRODUCT SPEC	NAME BOOT, RECEPTACLE, 3PIN DTM SERIES				
1 PLC \pm	APPLICATION SPEC	SIZE	CAGE CODE	DRAWING NO	RESTRICTED TO	
2 PLC \pm		A 4	00779	C-DTM3P-BT	-	
3 PLC ± 0.63 [.025]	WEIGHT	5.00 g		SCALE	SHEET	REV
4 PLC \pm		CUSTOMER DRAWING		5:4	1 OF 1	A1
ANGLES $\pm 5^{\circ}$						