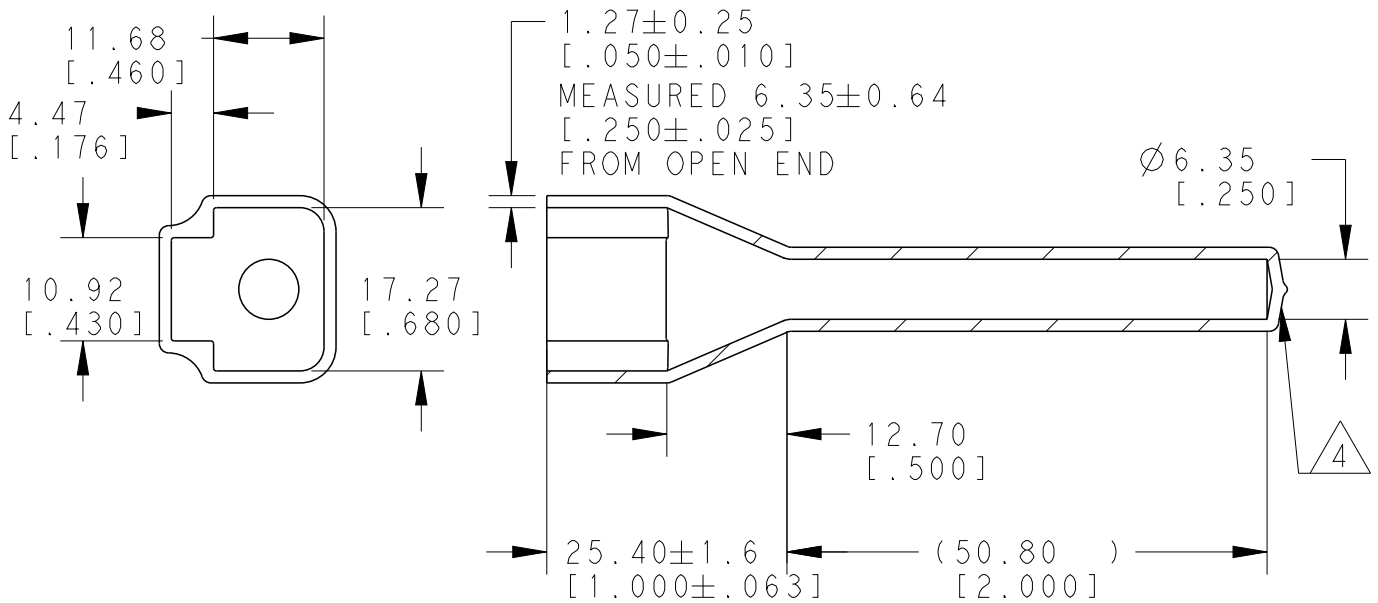
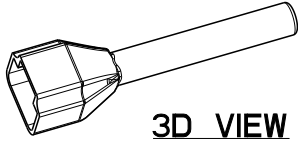


REVISIONS

P	LTR	DESCRIPTION	DATE	DWN	APVD
	A	NEW RELEASE PER ECO-14-012621	08-18-14	DM	DM
	A1	REVISED PER PCN E-20-003624	26FEB2020	AP	IG



5. SMALL NON-FILLS ARE ACCEPTABLE INSIDE OF PART, INCLUDING SUPPLIER MARKING.
4. SMALL MATERIAL EXTENSION IS ACCEPTABLE ON THIS END ALL AROUND. WALL THICKNESS AT THIS END MAY VARY.
3. THIS ACCESSORY PART IS PROVIDED WITHOUT TYPICAL TRANSPORTATION INDUSTRY PROCESS CONTROLS. NO VALIDATION TESTING HAS BEEN PERFORMED. CUSTOMER IS RESPONSIBLE FOR DETERMINING PRODUCT PERFORMANCE AND SUITABILITY FOR APPLICATION.
2. TEMPERATURE RATING: -29°C TO +100°C [-20°F TO +212°F]
1. THIS PART IS USED ON DTP06-2S PLUG WITH ANY MODIFICATION THAT DOES NOT INCLUDE AN END CAP.

NOTES:

TE INTERNAL PN	DEUTSCH PN
DTP2S-BT	DTP2S-BT

2019

RELEASED FOR PUBLICATION

ALL RIGHTS RESERVED.

BY TE CONNECTIVITY

© COPYRIGHT 2019

THIS DRAWING IS UNPUBLISHED.

DIMENSIONS: MM [INCHES]	DWN D. MEYER	18AUG2014	MATERIAL	PVC	FINISH	GRAY
	CHK B. MILLIGAN	18AUG2014	TE Connectivity			
TOLERANCES UNLESS OTHERWISE SPECIFIED:	APVD D. MEYER	18AUG2014				
0 PLC ±	PRODUCT SPEC	-	SIZE	CAGE CODE	DRAWING NO	RESTRICTED TO
1 PLC ±			A 4	4AFU8	©-DTP2S-BT	-
2 PLC ±0.63[.025]	APPLICATION SPEC	-	SCALE 5:4 SHEET 1 OF 1 REV A1			
3 PLC ±			CUSTOMER DRAWING			
4 PLC ±	WEIGHT	6.00				
ANGLES ±5°						