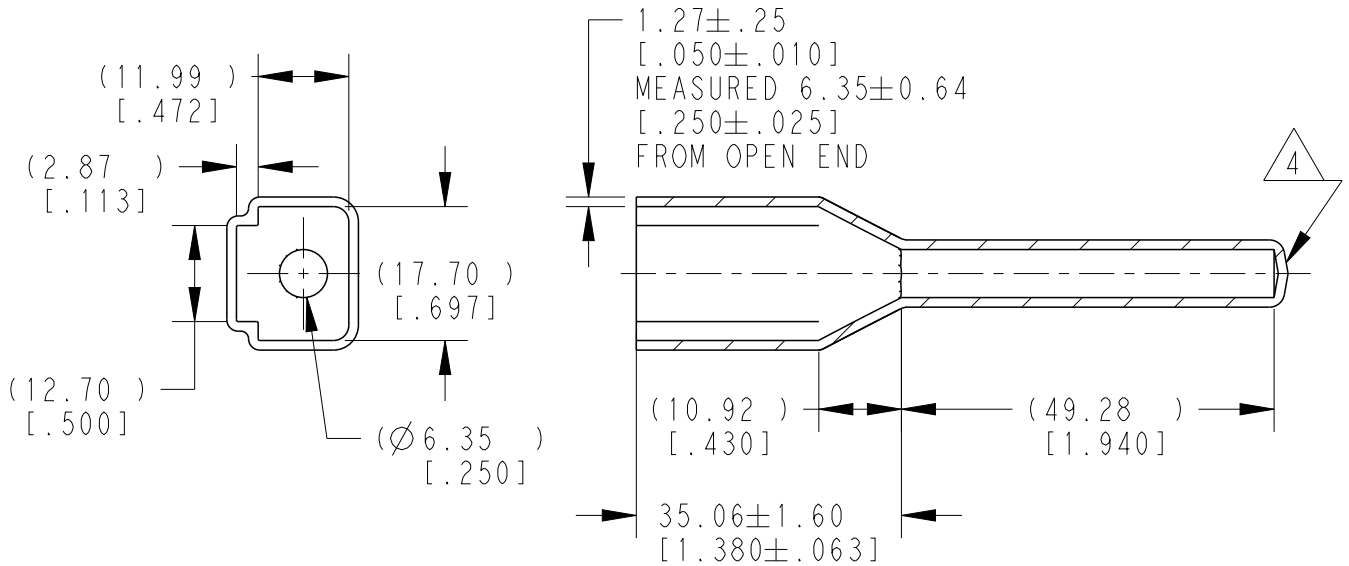
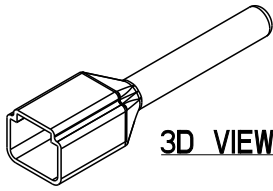


REVISIONS					
P	LTR	DESCRIPTION	DATE	DWN	APVD
	A	NEW RELEASE PER ECO-14-012621	08-18-14	DM	DM
	A1	REVISED PER PCN E-20-005609	16APR2020	AP	IG



5. SMALL NON-FILLS ARE ACCEPTABLE INSIDE OF PART, INCLUDING SUPPLIER MARKING.

4. SMALL MATERIAL EXTENSIONS ARE ACCEPTABLE ON THIS END ALL AROUND. WALL THICKNESS ON THIS END MAY VARY.

3. THIS ACCESSORY PART IS PROVIDED WITHOUT TYPICAL TRANSPORTATION INDUSTRY PROCESS CONTROLS. NO VALIDATION TESTING HAS BEEN PERFORMED. CUSTOMER IS RESPONSIBLE FOR DETERMINING PRODUCT PERFORMANCE AND SUITABILITY FOR APPLICATION.

2. TEMPERATURE RATING: -29°C TO +100°C [-20°F TO +212°F]

1. THIS PART IS USED ON DTP04-2P RECEPTACLE WITH ANY MODIFICATION THAT DOES NOT INCLUDE AN END CAP.

NOTES:

TE INTERNAL PN	DEUTSCH PN
DTP2P-BT-BK	DTP2P-BT-BK

2020
RELEASED FOR PUBLICATION
THIS DRAWING IS UNPUBLISHED.
COPYRIGHT 2020

TE Connectivity. All Rights Reserved.

DIMENSIONS: MM [INCH]	DWN D. MEYER	18AUG2014	MATERIAL	PVC	FINISH	BLACK
	CHK B. MILLIGAN	18AUG2014	TE Connectivity			
TOLERANCES UNLESS OTHERWISE SPECIFIED:	APVD D. MEYER	18AUG2014				
0 PLC ±	PRODUCT SPEC		SIZE	CAGE CODE	DRAWING NO	RESTRICTED TO
1 PLC ±	APPLICATION SPEC		A 4	00779	©-DTP2P-BT-BK	-
2 PLC ±0.63 [.025]	WEIGHT	6.00 g	SCALE 1:1			
3 PLC ±			SHEET 1 OF 1			
4 PLC ±			REV A1			
ANGLES ±5°	CUSTOMER DRAWING					