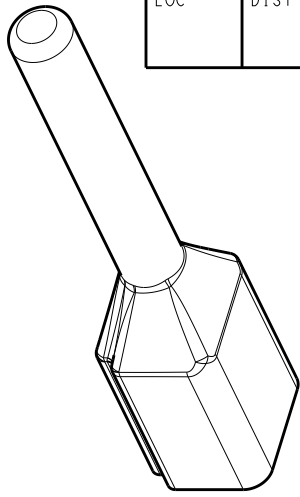
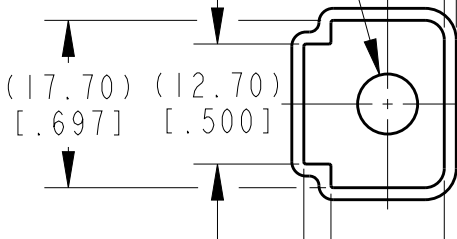


LOC		DIST		REVISIONS			
P	LTR	DESCRIPTION		DATE	DWN	APVD	
	A	NEW RELEASE PER ECO-14-012621		18AUG2014	DM	DM	
	AI	REVISED PER PCN E-19-016917		30OCT2019	JA	IG	



SCALE 1:1

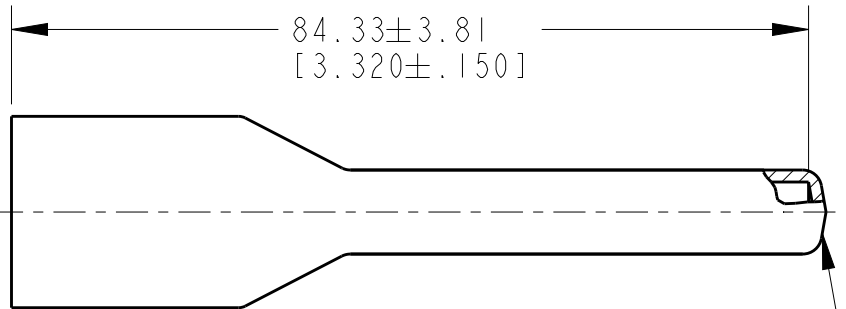
($\varnothing 6.35$)
[.250]



(17.70) (12.70)
[.697] [.500]

(2.87)
[.113]

1.27±0.25
[.050±.010]
MEASURED 6.35±0.64
[.250±.025]
FROM OPEN END



84.33±3.81
[3.320±.150]

(11.99)
[.472]



- 4 SMALL MATERIAL EXTENSION IS ACCEPTABLE ON THIS END ALL AROUND.
3. THIS ACCESSORY PART IS PROVIDED WITHOUT TYPICAL TRANSPORTATION INDUSTRY PROCESS CONTROLS. NO VALIDATION TESTING HAS BEEN PERFORMED. CUSTOMER IS RESPONSIBLE FOR DETERMINING PRODUCT PERFORMANCE AND SUITABILITY FOR APPLICATION.
 2. TEMPERATURE RATING: -29°C TO +100°C [-20°F TO +212°F].
 1. THIS PART IS USED ON DTP04-4P RECEPTACLES WITH ANY MODIFICATION THAT DOES NOT INCLUDE AN END CAP.

TE INTERNAL PN	DEUTSCH PN
DT2P-BT	DT2P-BT

2019
RELEASED FOR PUBLICATION
THIS DRAWING IS UNPUBLISHED.
COPYRIGHT 2014

TE Connectivity. All Rights Reserved.
ALL RIGHTS RESERVED.

DIMENSIONS: mm [INCHES]	DWN D.MEYER	18AUG2014	MATERIAL	PVC	FINISH	GRAY
	CHK R.MILLIGAN	18AUG2014	TE Connectivity			
TOLERANCES UNLESS OTHERWISE SPECIFIED:	APVD D.MEYER	18AUG2014				
	0 PLC ±	PRODUCT SPEC	SIZE	CAGE CODE	DRAWING NO	RESTRICTED TO
1 PLC ±	APPLICATION SPEC	WEIGHT	A 4	4AFU8	©-DTP2P-BT	-
2 PLC ±			CUSTOMER DRAWING			SCALE
3 PLC ±0.63 [.025]						5:4
4 PLC ±						SHEET
ANGLES ±0°30'0"						1
						OF
						1
						REV
						A1