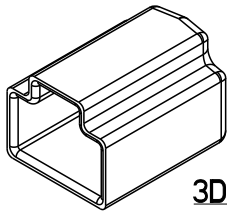
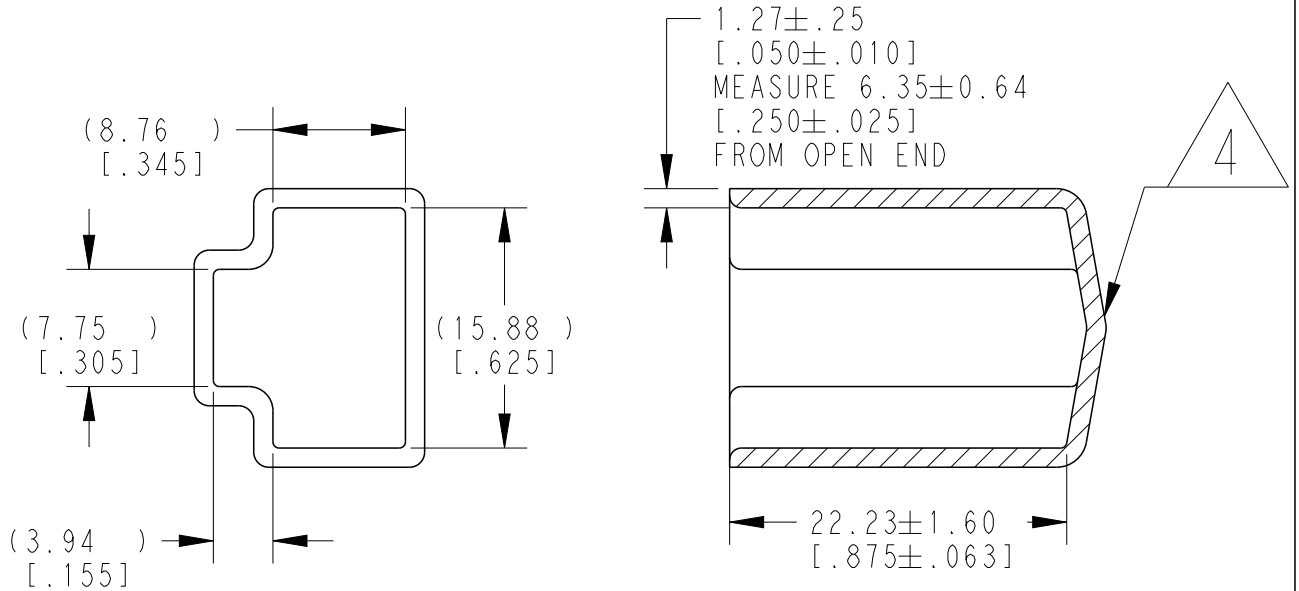


REVISIONS

P	LTR	DESCRIPTION	DATE	DWN	APVD
	B	REVISED PER ECO-16-001879	02-10-14	DM	DM
	B1	REVISED PER PCN E-20-005741	20APR2020	AP	IG



3D VIEW



5. SMALL NON-FILLS ARE ACCEPTABLE INSIDE OF PART, INCLUDING SUPPLIER MARKING.

4. SMALL MATERIAL EXTENSION IS ACCEPTABLE ON THIS END ALL AROUND. WALL THICKNESS ON THIS END MAY VARY.

3. THIS ACCESSORY PART IS PROVIDED WITHOUT TYPICAL TRANSPORTATION INDUSTRY PROCESS CONTROLS. NO VALIDATION TESTING HAS BEEN PERFORMED. CUSTOMER IS RESPONSIBLE FOR DETERMINING PRODUCT PERFORMANCE AND SUITABILITY FOR APPLICATION.

2. TEMPERATURE RATING: -29°C TO +100°C [-20°F TO +212°F]

1. THIS PART IS USED ON DTM06-3S WITH ANY MODIFICATION.

NOTES:

TE INTERNAL PN	DEUTSCH PN
DTM3S-DC	DTM3S-DC

2020

RELEASED FOR PUBLICATION

THIS DRAWING IS UNPUBLISHED.

TE Connectivity. All Rights Reserved. © COPYRIGHT 2020

DIMENSIONS: MM [INCH]		DWN D. MEYER 07JUL2014	MATERIAL PVC	FINISH GRAY
TOLERANCES UNLESS OTHERWISE SPECIFIED:		CHK B. MILLIGAN 07JUL2014	TE Connectivity	
0 PLC ±		APVD D. MEYER 07JUL2014		
1 PLC ±		PRODUCT SPEC	NAME DUST CAP, PLUG, 3PIN DTM SERIES	
2 PLC ±0.25[.063]		APPLICATION SPEC	SIZE A 4	CAGE CODE 00779
3 PLC ±			DRAWING NO C=DTM3S-DC	RESTRICTED TO -
4 PLC ±				
ANGLES ±5°		WEIGHT 3.00 g		
		CUSTOMER DRAWING	SCALE 2:1	SHEET 1 OF 1
				REV B1