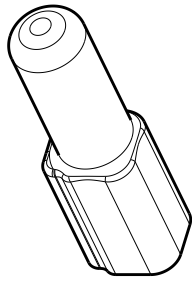
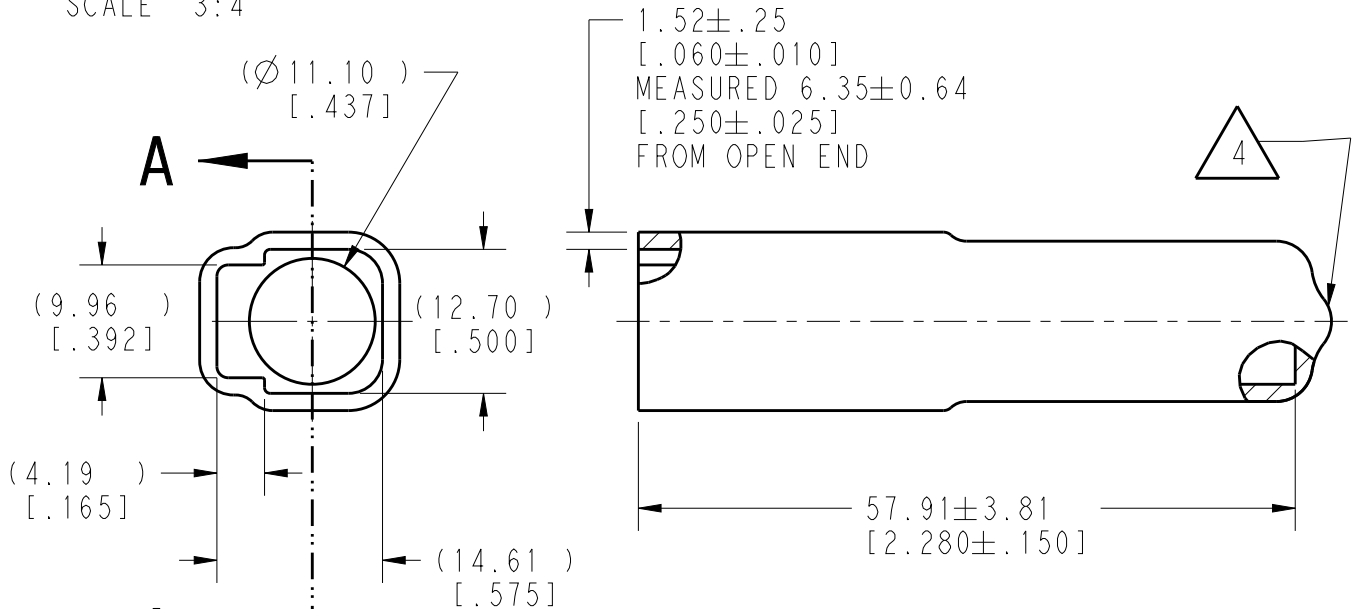


REVISIONS

P	LTR	DESCRIPTION	DATE	DWN	APVD
	A1	REVISED PER ECO-15-003782	10MAR2015	PS	DM
	A2	REVISED PER PCN E-18-006794	03MAY2018	SM	DM
	A3	REVISED PER ECR-19-009112	10JUN2019	JA	IG
	A4	REVISED PER PCN E-19-014641	16OCT2019	JA	IG



SCALE 3:4



**SECTION A-A**

- 4 SMALL MATERIAL EXTENSION IS ACCEPTABLE ON THIS END ALL AROUND.
3. THIS ACCESSORY PART IS PROVIDED WITHOUT TYPICAL TRANSPORTATION INDUSTRY PROCESS CONTROLS. NO VALIDATION TESTING HAS BEEN PERFORMED. CUSTOMER IS RESPONSIBLE FOR DETERMINING PRODUCT PERFORMANCE AND SUITABILITY FOR APPLICATION.
2. TEMPERATURE RATING: -29°C TO +100°C [-20°F TO +212°F]
1. THIS PART IS USED ON DT06-2S PLUG WITH ANY MODIFICATION THAT DOES NOT INCLUDE AN END CAP.

NOTES:

TE INTERNAL PN	DEUTSCH PN
DT2S-BT-YW	DT2S-BT-YW

2019 RELEASED FOR PUBLICATION ALL RIGHTS RESERVED. BY TE CONNECTIVITY © COPYRIGHT 2014 THIS DRAWING IS UNPUBLISHED.

DIMENSIONS: MM [INCHES]	DWN D.MEYER	10JUN2014	MATERIAL PVC	FINISH YELLOW	
	CHK R.MESSENGER	10JUN2014	TE Connectivity		
TOLERANCES UNLESS OTHERWISE SPECIFIED: 0 PLC ± 1 PLC ± 2 PLC ±0.63 [.025] 3 PLC ± 4 PLC ± ANGLES ±5°	APVD D.MEYER	10JUN2014			NAME BOOT, PLUG, 2 PIN DT SERIES
	PRODUCT SPEC	-	SIZE A4	CAGE CODE 4AFU8	DRAWING NO C=DT2S-BT-YW
	APPLICATION SPEC	-	RESTRICTED CUSTOMER		
	WEIGHT 4.57 g		SCALE 3:2	SHEET 1 OF 1	REV A4