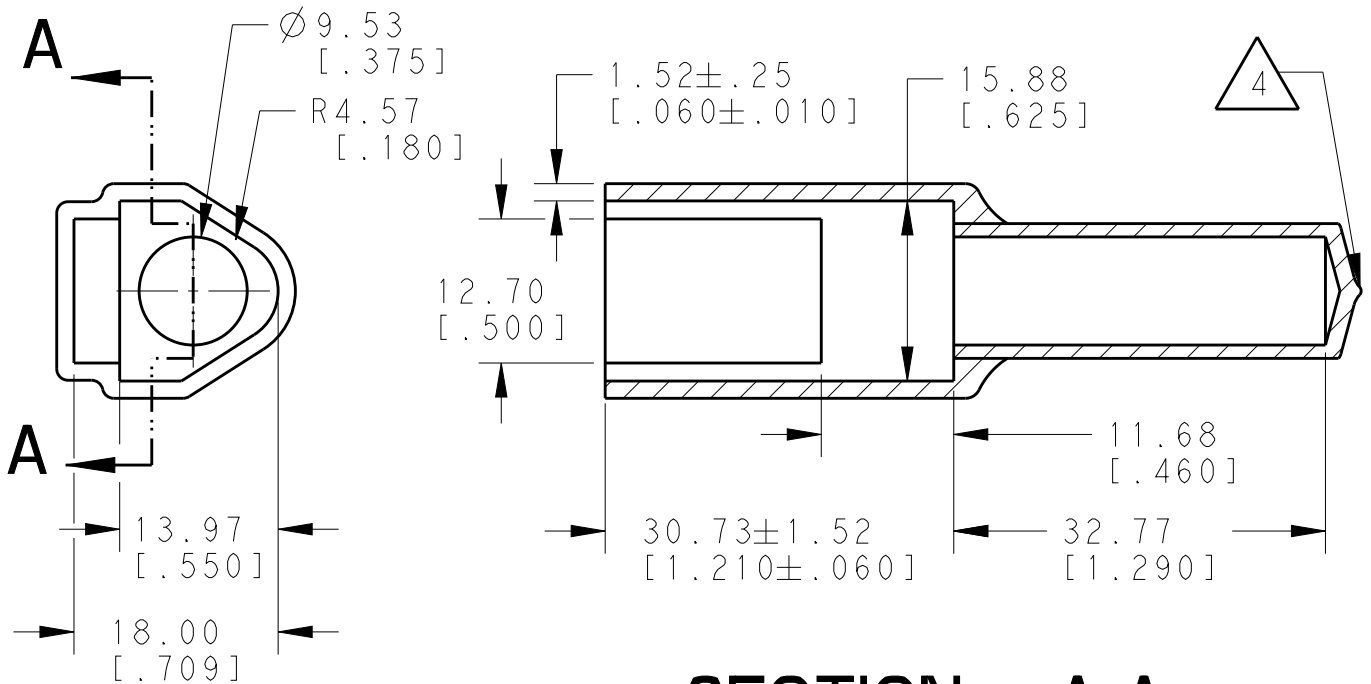


REVISIONS				
P	LTR	DESCRIPTION	DATE	APVD
	A	NEW RELEASE PER ECO-14-008759	10JUN2014	DM DM
	A1	REVISED PER PCN E-18-006794	03MAY2018	SM DM




SECTION A-A

4. SMALL MATERIAL EXTENSION IS ACCEPTABLE ON THIS END ALL AROUND.
3. THIS ACCESSORY PART IS PROVIDED WITHOUT TYPICAL TRANSPORTATION INDUSTRY PROCESS CONTROLS. NO VALIDATION TESTING HAS BEEN PERFORMED. CUSTOMER IS RESPONSIBLE FOR DETERMINING PRODUCT PERFORMANCE AND SUITABILITY FOR APPLICATION.
2. TEMPERATURE RATING: -29°C TO +100°C [-20°F TO +212°F]
1. THIS PART IS USED ON DT04-3P RECEPTACLES WITH ANY MODIFICATION THAT DOES NOT INCLUDE AN END CAP.

TE INTERNAL PN	DEUTSCH PN
DT3P-BT	DT3P-BT

2014
 RELEASED FOR PUBLICATION
 ALL RIGHTS RESERVED.
 BY TE CONNECTIVITY
 COPYRIGHT 2014
 THIS DRAWING IS UNPUBLISHED.

DIMENSIONS: MM [INCH]	DWN D. MEYER	10JUN2014	MATERIAL	PVC	FINISH	GRAY
	CHK R. MESSENGER	10JUN2014	 TE Connectivity			
TOLERANCES UNLESS OTHERWISE SPECIFIED:	APVD D. MEYER	10JUN2014				
0 PLC ±	PRODUCT SPEC	-	NAME	BOOT, RECEPTACLE, 3PIN DT SERIES		
1 PLC ±	APPLICATION SPEC	-	SIZE	CAGE CODE	DRAWING NO	RESTRICTED TO
2 PLC ±0.63 [.025]	WEIGHT	7.00 G	A4	4AFU8	©-DT3P-BT	
3 PLC ±	CUSTOMER DRAWING		SCALE	NONE	SHEET	1 OF 1
4 PLC ±					REV	A1
ANGLES ±5°						